

The field of infusion therapy implies the treatment of a patient with intravenously applied infusion solutions in order to enable a patient's recovery or improvement of his illness. Depending on the underlying illness, the solution contains an appropriate active pharmaceutical ingredient.

This defines the type of definitive therapy: For example, fluid therapy aims to infuse larger volumes of water and appropriate electrolytes to patients for treatment of volume depletion such as major bleeding, dehydration or shock. Another example might be anti-infective therapy which means the treatment of a patient suffering from an infection with bacteria or fungi by infusing solutions containing antibiotics and antifungals.



Plastrue Co. LTD

Almashael, Istanbul Str.

Alfozan Industrial Zone, Block 24. #157

Riyadh 14328 Saudi Arabia

www.plastrue.com

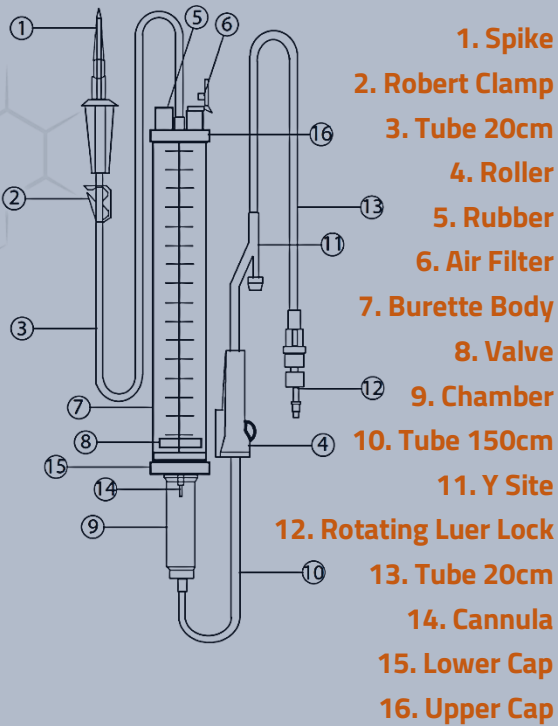
A close-up photograph of a Drippo infusion pump. It is a clear plastic chamber with a white top and a blue adjustment knob. The chamber is partially filled with clear liquid and has a small white float valve inside. It is mounted on a metal stand.

Drippo Infusion Pump

Compatible products

Micro Drip Burette

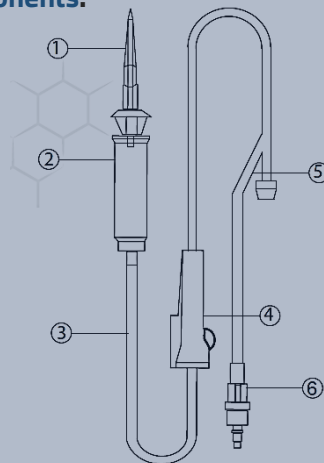
Elements & Components:



IV Set with Y Site 170cm

Elements & Components:

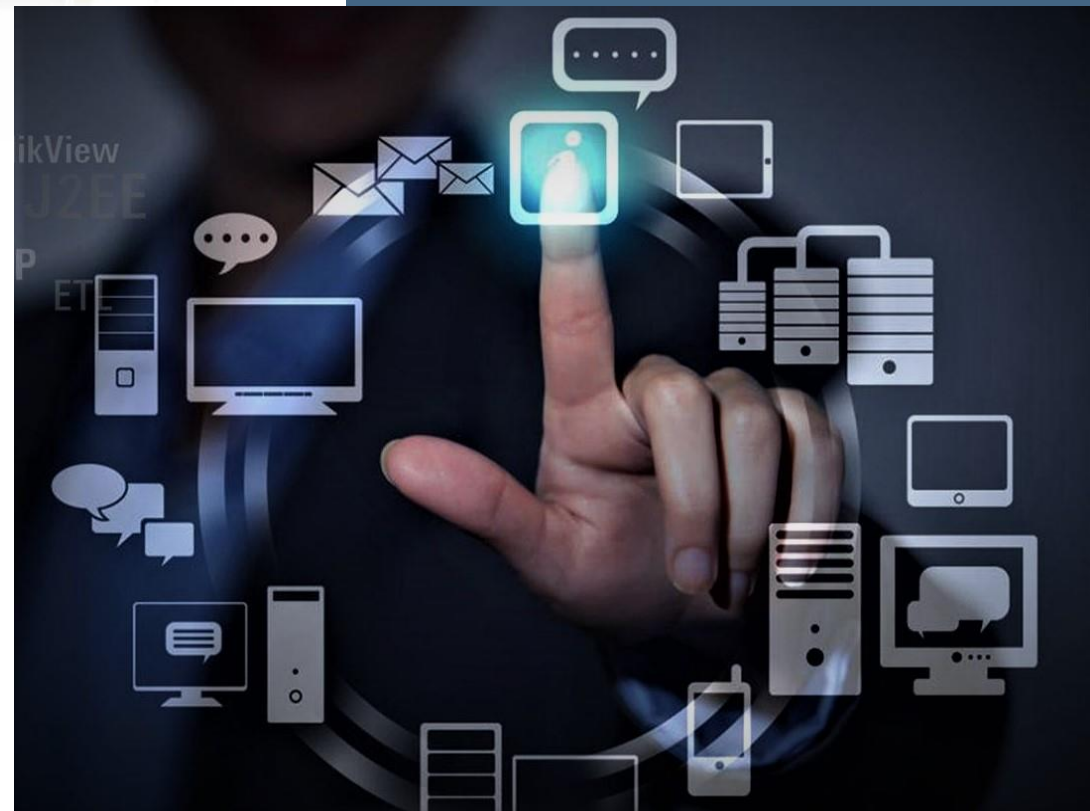
1. Spike
2. Chamber
3. Tube 170cm
4. Roller
5. Y Site
6. Male Luer Lock



Plastrue is capable to interfere in the treatment by providing tubing for Single & Dual Channel Pumps

Tubing elasticity and diameter can be adjusted to meet pump manufacturer standards.

With or without silicone tubing



Benefits:

Realtime: Simultaneous monitoring of up to 30 unit

Efficiency: Enhance the pump usage knowing their current status

Monitoring: Wireless connection allows for remote monitoring and control